

---

JUNE 2019

# MYANMAR REPORT

CONSTRUCTION MARKET  
UPDATE





## MYANMAR ECONOMY

Myanmar is presently in a development phase towards achieving a market economy. Myanmar's gross domestic product (GDP) is expected to grow by 6.6% in 2019 and 6.8% in 2020. Economic momentum appears to have picked up in 2019, after a slowing down last year arising from lower agricultural production. In the last quarter, the output in the manufacturing sector has significantly improved from 2018 which experienced cost pressures and exchange rate volatility. Domestic demands have firmed up on a more stable kyat and low inflation in the first quarter. The government's economic reform efforts this year should further strengthen the domestic economy. General inflation rates are forecast at 6.8% for 2019 and 7.5% for 2020.

Myanmar is anticipated to benefit from greater foreign direct investment (FDI) inflows and a more expansionary government budget this year. However, slower Chinese economic growth and a potential loss of preferential market access to the EU would affect exports, and the continuing political tensions in the Rakhine state could also impact upon the growth of new foreign investments.

The government's continuing implementation of the Myanmar Sustainable Development Plan was

shown in recent reforms including implementation of the new Myanmar Companies Law, opening of the insurance sector and wholesale and retail markets to foreign players, services sector liberalization, and loosening restrictions on foreign bank lending. The Myanmar Central Bank has since 2018 opened up lending opportunities for foreign banks operating in Myanmar where they are allowed to lend money to foreign companies and joint venture operations in Myanmar, opening up the possibilities for businesses to get loans for construction projects. In addition, the availability of private loans to local property buyers to purchase property has supported the positive outlook of the construction sector. Other recent legislation, including the Condominium Law and Rules and the Gambling Act, will assist in facilitating new business opportunities for foreign investors.

There remain significant development challenges for Myanmar which includes addressing shortfalls in infrastructure and human capital, maintaining macroeconomic and fiscal stability in a challenging global economic environment, accelerating the institutional reform process, and generally improving governance and environmental standards.



## MYANMAR CONSTRUCTION MARKET

In 2018, the Myanmar construction industry had a value of more than US\$ 9.5 billion. This is a share of around 16.5 percent of the country's GDP and will be a major driver of the economy in 2019. As a member of the ASEAN economic bloc, Myanmar has become an increasingly attractive foreign investment destination, and this includes investments in real estate and infrastructure. Both major economic centers of the country, Yangon and Mandalay, have a strong demand for middle-class residential housing. Yangon's population is estimated to grow by 3 million within the next ten years thereby requiring massive housing investments.

Industrial area development has become a major driver of the construction sector. There are three Special Economic Zones in Myanmar, Thilawa, Kyauk Phyu and Dawei currently being developed. Several new industrial parks are planned in the country while some industrial parks in Yangon are already under construction.

The infrastructure gap between now and 2030 is estimated by the Asian Development Bank to be worth US\$ 120 billion. Highways, railways, harbours and airports require significant investments by international parties who could joint venture with local entities. These include the modernization of its trunk road network, new highways, improving access to the city via new bridges. The development of regional airports has also been part of the government's plans in developing both the tourism and transport sectors, in addition to its existing plane and cargo handling services that require both technological support and investment. Myanmar's telecoms infrastructure is also in need of development in order to provide the country with full coverage. Upgrading of its mobile network to a fibre network also presents opportunities to improve Myanmar's global connectivity.

The Myanmar construction market appears to be generally slow in the private sector, and the property market is expected to stay flat until 2020. Construction material supply prices are generally in a downward trend from 1Q2016 to 1Q2019 with the exception of steel reinforcement and structural steel where the imported material costs were inflated by the relatively weak Myanmar kyat. Construction cost escalation is estimated to be in the order of 3% to 5% for 2019, while tender bidding market for building and infrastructure projects currently appears to remain relatively competitive.

Some major on-going private projects in Yangon Region include the Landmark project by Yoma, Yangon Central Mixed Development by Tokyo Tatemono Asia/Fujita Corporation, Emerald Bay by Country Garden and The Central by Marga Global. Public projects are gaining momentum amid slow but steady implementation given the public perception of Public Private Partnership projects and the coming state elections in 2020. There are a number of mega on-going public projects in Myanmar, such as New Mandalay Resort City (9,893 acres), Smart District Project at Dagon Seikken township development (1,100 acres), Korea-Myanmar Industrial Complex Project, and the Eco Green City, a US\$2 billion project with a 10 to 15 year township development period. The New Yangon City Project also presents a major opportunity for the involvement of foreign companies. On 20,000 acres of land and with estimated costs of US\$ 1.5 billion, the project will create accommodation for 3 million and jobs for 2 million people.

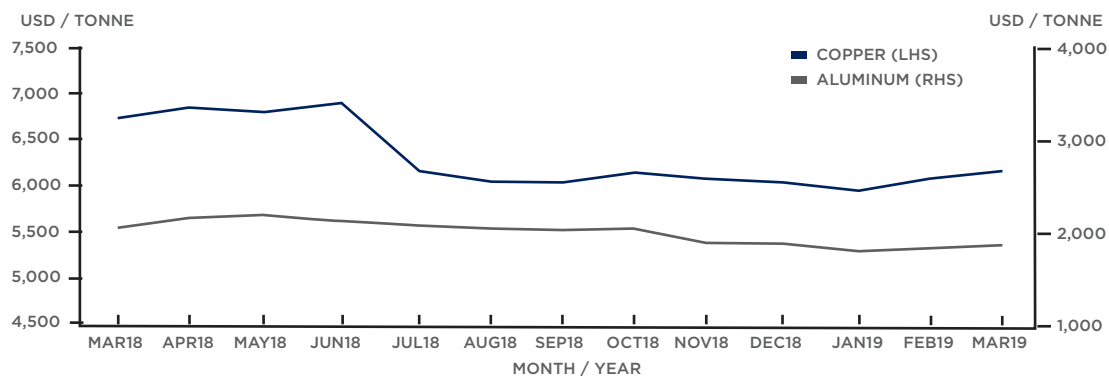
## 20 KAP OFFICE BUILDING A.K.A THE EMBANKMENT ◀

### YANGON, MYANMAR

<b>CLIENT:</b>	Four Rivers Inya Office Co. Ltd
<b>ARCHITECT:</b>	Aedas Pte Ltd
<b>SERVICE:</b>	Full QS Services
<b>COMPLETION:</b>	2021

RLB is the appointed QS for the proposed one block of 17-Storey Office Tower with Two Basements, located at Kabaraye Road, Yangon, Myanmar.

## METAL PRICES



	AVG 4Q18 / 1Q19 Change	Mar 2018	Apr 2018	May 2018	JUN 2018	JUL 2018	AUG 2018	SEP 2018	OCT 2018	NOV 2018	DEC 2018	JAN 2019	FEB 2019	MAR 2019
Copper	0.9% ↑	6795	6838	6821	6954	6247	6039	6019	6215	6192	6093	5931	6277	6450
Aluminium	-5.5% ↓	2076	2245	2290	2240	2098	2045	2022	2034	1937	1931	1845	1859	1872

Data Sources: London Metal Exchange (LME)

## CONSTRUCTION MATERIAL PRICES

MATERIAL	UNIT	AVERAGE SUPPLY RATE (MMK)			
		2H2017	1H2018	2H2018	1H2019 <sub>p</sub>
Concreting Sand	m <sup>3</sup>	3,239	3,279	3,474	3,444
Stone Aggregate (20mm)	m <sup>3</sup>	33,116	19,664	18,325	20,753
Ordinary Portland Cement	kg	105	105	99	113
Reinforced Concrete (Grade 30 MPA)	m <sup>3</sup>	87,330	81,500	85,117	87,250
Reinforced Concrete (Grade 40 MPA)	m <sup>3</sup>	94,750	92,750	91,750	95,250
High Tensile Steel Bars (10 - 32mm)	kg	755	864	907	910
Mild Steel round bars (6 - 25mm)	kg	679	824	879	824
Structural Steelwork (U-beam, stanchions)	tonne	863,195	952,506	1,041,167	1,024,501
Plywood Formwork (2438 x 1219 x 20mm)	pc	33,296	31,991	33,611	33,556
Clay Bricks (100mm thick brickwall)	pc	111	84	85	85

Data Sources: Market Sources  
p: preliminary

**Exclusions:** • Plant and Equipment • Transport • Wastage • Overheads and Profit • Preliminaries • Withholding Tax • Commercial Tax

**Notes:** All supply prices stated above are only applicable for building construction projects in Yangon. Specific cost consultancy should be sought for your particular factual situation prior to utilising this information.

## CURRENCY EXCHANGE

CURRENCY	UNITS PER USD			
	2Q2018	3Q2018	4Q2018	1Q2019
USD to MYANMAR KYAT (MMK)	1,425	1,567	1,554	1,524

Data Sources: Oanda

## YANGON CONSTRUCTION PRICES

DEVELOPMENT TYPE	COST PER CFA MMK ('000) / m <sup>2</sup>	COST PER CFA USD / m <sup>2</sup>
<b>OFFICE</b>		
Standard	1,350 - 2,060	890 - 1,350
Prestige	1,830 - 2,480	1,200 - 1,630
<b>HOTEL (Excluding FF&amp;E)</b>		
Three Star	2,270 - 3,290	1,490 - 2,160
Four Star	2,610 - 3,740	1,720 - 2,460
Five Star	3,070 - 4,150	2,020 - 2,730
<b>COMMERCIAL</b>		
Medium Quality Retail	1,670 - 2,160	1,100 - 1,420
Good Quality Retail	2,210 - 2,740	1,450 - 1,800
<b>RESIDENTIAL</b>		
Medium Quality Condominium	1,260 - 1,920	830 - 1,260
Good Quality Condominium	1,610 - 2,340	1,060 - 1,540
<b>CARPARK</b>		
Above Grade Carpark	610 - 910	400 - 600
Basement Carpark	1,300 - 1,750	850 - 1,150

**Notes:** Construction Floor Area (CFA) - The area of all building enclosed covered spaces measured to the outside face of external walls including covered basement and above ground car park areas.

All Yangon construction prices stated herein are as at **1st Quarter 2019**, and include a general allowance for preliminaries, foundation, car parking, and external works. The price ranges herein are indicative and due consideration should be given to the different specification, size, location and nature of each project when utilising this information. The prices here may not fully reflect the extent of current market forces and tendering conditions.

**Exchange Rate Used:** USD 1 = MMK 1,524

**Exclusions:** • Land Cost • Legal and Professional Fees • Development Charges • Authority Fees • Finance Costs • Site Infrastructure Works • Diversion of Existing Services • Models and Prototypes • Future Cost Escalation • Loose Furniture, Fittings and Works of Art • Tenancy Work • Resident Site Staff Cost • Withholding Tax • Commercial Tax

Disclaimer: While Rider Levett Bucknall Limited ("RLB") has endeavoured to ensure the accuracy of the information and materials in this report (the "Materials"), it does not warrant its accuracy, adequacy, completeness or reasonableness and expressly disclaims liability for any errors in, or omissions therefrom. RLB shall not be liable for any damage, loss or expense whatsoever arising out of or in connection with the use or reliance on the Materials. The Materials are provided for general information only. Professional advice should be obtained for your particular factual situation before making any decision. The Materials may not, in any medium, be reproduced, published, adapted, altered or otherwise used in whole or in part in any manner without the prior written consent of RLB.

RIDER LEVETT BUCKNALL (RLB) is an independent, global property and construction practice with over 3,500 people in more than 120 offices across Asia, Oceania, Europe, Middle East, Africa and the Americas, serving major local and international clientele.

RLB's global expertise and significant project experience provides comprehensive services and solutions to the development and construction of the built environment, extending to building and civil infrastructure, commercial, residential and hospitality buildings, healthcare, industrial and civil engineering projects.

As a multi-disciplinary group, RLB offers a full range of services required by clients in the property and construction industry, ranging from cost consultancy and quantity surveying, project management, advisory services and market research.

RLB Research's expertise in economic and market studies, industry participation and research publications position us as the choice consultant for advice on construction cost trends and market updates for the regional construction markets.

The extensive range of professional consultancy provided by RLB covers the following core services:

## QS AND COST CONSULTANCY

- Feasibility Studies
- Cost Planning and Estimating
- Value Engineering
- Life Cycle Cost Planning
- Tender & Contract Documentation
- Contract Procurement and Delivery
- Cost Management
- Progress and Variation Valuations
- Post-Contract Services
- Project Risk Management
- Financial Reporting and Management
- Final Accounts

## PROJECT MANAGEMENT

- Client Representation
- Project Management Services
- Development Management
- Contract Administration
- Procurement Management

## ADVISORY AND RESEARCH

- Asset Advisory
- Transaction Review
- Technical Due Diligence
- Replacement Cost Assessment
- Capital Cost Allowances Assessment
- Building RELifing® Services
- Facilities Management Consulting
- Litigation Support
- Risk Mitigation and Due Diligence
- Procurement Strategies
- Auditing Services
- Construction Market Research
- Industry Trend Analysis
- Cost Escalation and Cost Benchmarking by Sectors

For enquiries, please contact:

## RIDER LEVETT BUCKNALL LIMITED

Union Business Centre, Nat Mauk Road, Bo Cho Quarter, Bahan Township, Suite 03-02, Yangon 11121, Myanmar  
T: +95 1 860 3448 Ext 4004 | E: [rlb@mm.rlb.com](mailto:rlb@mm.rlb.com) | W: [www.rlb.com](http://www.rlb.com) | Contact: Serene Wong

## RLB REGIONAL PRACTICES

### SINGAPORE

**Rider Levett Bucknall LLP**  
911 Bukit Timah Road  
Level 3, Singapore 589622  
T: +65 6339 1500  
F: +65 6339 1521  
E: [rlb@sg.rlb.com](mailto:rlb@sg.rlb.com)  
Contact: Colin Kin / Silas Loh

### INDONESIA

**PT. Rider Levett Bucknall**  
Jl. Jend. Sudirman Kav. 45-46  
Sampoerna Strategic Square,  
South Tower Level 19  
Jakarta 12930, Indonesia  
T: +62 21 5795 2308  
E: [rlb@id.rlb.com](mailto:rlb@id.rlb.com)  
Contact: Widitomo Puntoadi

### MALAYSIA

**RL Bersepadu Sdn Bhd**  
B2-6-3 Solaris Dutamas  
No. 1 Jalan Dutamas 1  
50480 Kuala Lumpur, Malaysia  
T: +60 3 6207 9991  
F: +60 3 6207 9992  
E: [rlb@my.rlb.com](mailto:rlb@my.rlb.com)  
Contact: Lai Kar Fook

### VIETNAM

**Rider Levett Bucknall Co. Ltd**  
Centec Tower, 16th Floor  
Unit 1603, 72-74  
Nguyen Thi Minh Khai Street Ward  
6 District 3  
Ho Chi Minh City, Vietnam  
T: +84 83 823 8070  
F: +84 83 823 7803  
E: [rlb@vn.rlb.com](mailto:rlb@vn.rlb.com)  
Contact: Ong Choon Beng / Serene Wong

# OFFICES AROUND THE WORLD

## AFRICA

### BOTSWANA

Gaborone

### MAURITIUS

Saint Pierre

### MOZAMBIQUE

Maputo

South Africa

Cape Town

Johannesburg

Pretoria

## ASIA

### NORTH ASIA

Beijing

Chengdu

Chongqing

Dalian

Guangzhou

Guiyang

Haikou

Hangzhou

Hong Kong

Jeju

Macau

Nanjing

Nanning

Qingdao

Seoul

Shanghai

Shenyang

Shenzhen

Tianjin

Wuhan

Wuxi

Xiamen

Xian

Zhuhai

### SOUTH ASIA

Bacolod

Bohol

Cagayan de Oro

Cebu

Davao

Ho Chi Minh City

Iloilo

Jakarta

Kuala Lumpur

Laguna

Metro Manila

Singapore

Yangon

## AMERICAS

### CARIBBEAN

Barbados

Cayman Islands

St. Lucia

### NORTH AMERICA

Austin

Boston

Calgary

Chicago

Denver

Guam

Hilo

Honolulu

Las Vegas

Los Angeles

Maui

New York

Orlando

Phoenix

Portland

San Francisco

Seattle

Toronto

Tucson

Waikoloa

Washington DC

## EUROPE

### UNITED KINGDOM

Birmingham

Bristol

Cumbria

Leeds

London

Manchester

Sheffield

Thames Valley

Warrington/Birchwood

Welwyn Garden City

### RLB | Euro Alliance

Austria

Belgium

Czech Republic

Finland

Germany

Hungary

Ireland

Italy

Luxemburg

Netherlands

Norway

Poland

Portugal

Russia

Spain

Sweden

Turkey

## MIDDLE EAST

### OMAN

Muscat

### QATAR

Doha

### SAUDI ARABIA

Riyadh

### UNITED ARAB EMIRATES

Abu Dhabi

Dubai

## OCEANIA

### AUSTRALIA

Adelaide

Brisbane

Cairns

Canberra

Coffs Harbour

Darwin

Gold Coast

Melbourne

Newcastle

Perth

Sunshine Coast

Sydney

Townsville

### New Zealand

Auckland

Christchurch

Hamilton

Palmerston North

Queenstown

Tauranga

Wellington

