



SECTOR CAPABILITY

CONDITION IMPROVEMENT FUND

ENSURING WE KEEP YOUR STUDENTS SAFE, WARM AND DRY

INTRODUCTION

The Condition Improvement Fund (CIF) can provide a significant benefit to schools and academies as they balance increasingly tight budgets against curriculum needs and the upkeep of their estate.

As access to government funding becomes increasingly competitive, it is essential schools and trusts submit rigorous bids that are forensic in analysis of the criteria.

As a trusted partner to our clients, we help provide high-quality learning environments that meet the needs of students, teachers, and the wider community.

Our experts have been successful in procuring £200m of capital funding for long-standing projects, refurbishments and alterations. **All at no cost to the Academies.**

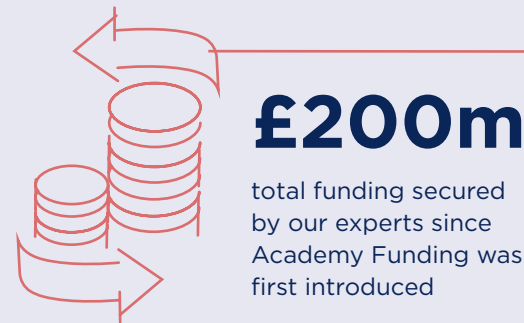
Our experience has allowed us to understand the Capital Funding procedures and schemes likely to receive approval. We have consistently achieved a high bid success rate equal to or above the national average.

We have secured funding for many schemes through the Condition Improvement Fund, ranging from roof renewals, heating system upgrades, electrical rewires, fire alarm replacements, fire safety upgrades, kitchen refurbishments, safeguarding and asbestos removal works. Moving forward, we foresee that sustainability will be a key target area.

Our knowledge of CIF has developed with each round and we have consistently achieved a high bid success rate equal to or above the national average.

A number of Academy Trusts have retained us to bid over multiple rounds, and then to assist them in identifying and delivering projects across their estate once they have moved away from CIF to Formula Funding.

FUNDING OBTAINED



CONDITION IMPROVEMENT FUND

YOUR RESPONSIBILITIES

Academy leaders and governors have a key responsibility to manage the trust's finances and buildings. Due to our extensive knowledge and experience of the requirements needed when bidding for funding, we can prepare bespoke bids to provide the strongest evidence of need.

This includes our commitment to you to ensure:

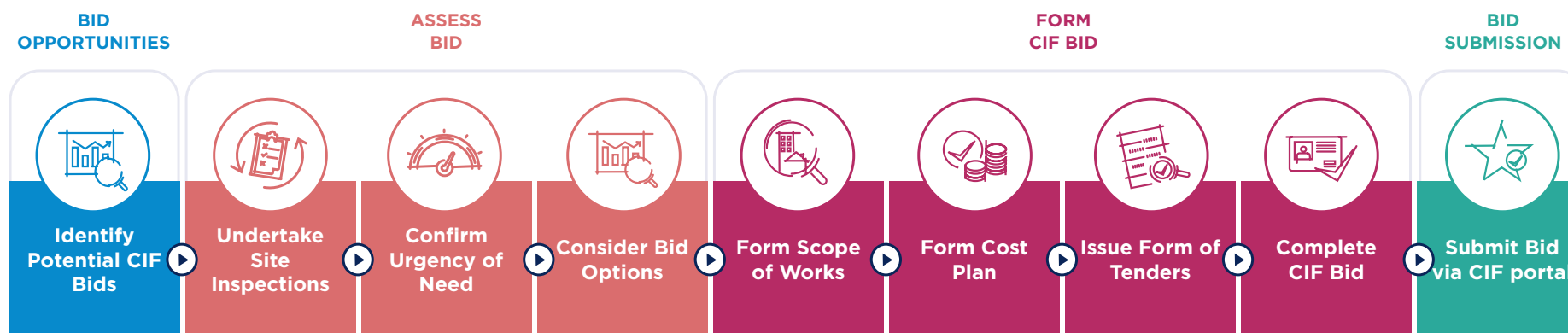
- Statutory and legislative standards are met
- Buildings are maintained to a good standard
- Curriculum is uninterrupted through good maintenance of school buildings
- All capital funding streams are explored

HOW WE CAN HELP

With our extensive knowledge and experience of the requirements needed when bidding for funding, we are able to prepare bespoke bids to provide the strongest evidence of need in each case.

Our approach reviews each case on merit and includes:

- Identification of project need based on the Department for Education (DfE) guidance
- Reviewing the condition of the buildings / installations to demonstrate risk of school closure
- Reviewing statutory and legislative compliance and identifying gaps or concerns
- Bid delivery, opportunities and assessment
- Project design and delivery



TESTIMONIALS



“We have been working with RLB since forming our MAT in 2016. The decision to move to RLB was on a recommendation from another MAT and **the no fee for bid writing was a huge consideration**. We have never looked back.

The CIF guidelines are very clear about the level of detail required and Chris Jefferies and his team have worked closely with our MAT throughout the application process to submit **comprehensive bids, which carefully targets the guidelines to ensure the best possible outcome for the bids**. Since starting our journey, RLB have been successful in obtaining £6m in CIF Funding for our academies. This has made a **tremendous difference to our schools**. The variety of work carried out covers complete heating systems, new school roof, replacement emergency lighting renewal and replacement fire alarm systems.

The central team, along with our business managers, have built up a long-term relationship with Chris and his team and there is a shared understanding of our MAT requirements. **RLB delivers a professional and effective service and from my point of view, ease my workload** as Chris uploads the applications onto the CIF portal, completes the monitoring returns and issues a complete financial breakdown to our CFO.

The majority of our building work is carried out throughout the summer break and the RLB team organise the initial meetings with the contractors and schools and review meetings throughout the projects.

Without reservation I would endorse RLB and Chris Jefferies.”

Deborah Temperton, Chief Projects Officer/DPO
The Rose Learning Trust



Safe

15,000 pupils
safeguarded



Warm

10,000 pupils
kept warm



Dry

20,000 pupils
kept dry

“We would like to thank RLB for their **hard-work, commitment and speed in delivering** what has been an instrumental project for one of the schools in the Trust.

The RLB team could not have done more to support the Trust in our first CIF bid project. We look forward to working with you again on future projects.”

Nicola Roys, Director of Operations
Interaction and Communication Academy Trust



“Working with RLB has been **an extremely positive and seamless process**, we’ve had **great success** in securing a large amount of funding which is invaluable to our schools.

I cannot explain how grateful I am to everybody at RLB, **the advice, attention to detail and customer service is second to none.**”

Sarah Jones, Trust Business Manager
Swift Academies



OUR EXPERIENCE

Key:



Safe



Warm



Dry



ROSE LEARNING TRUST ◀ **DONCASTER**

FUNDING SECURED: £6m over four bidding rounds

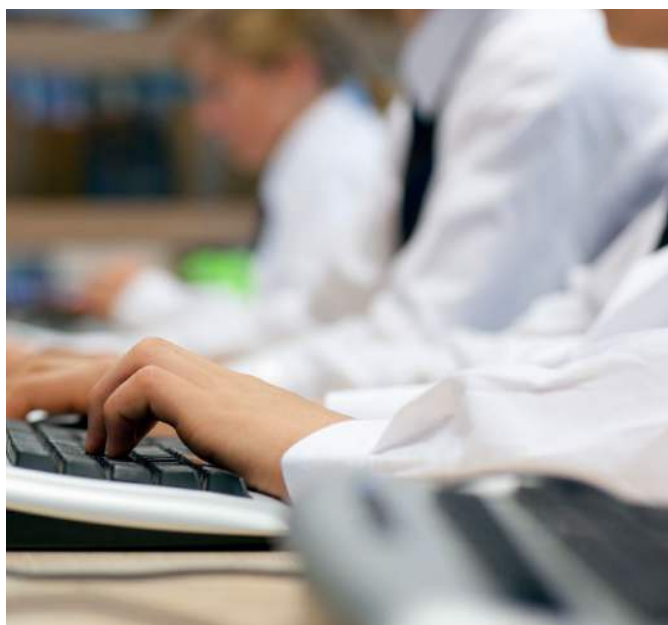
- Fire safety and precaution works safeguarding 1,800 pupils
- Re-roofing projects benefitting 1,800 pupils
- Boiler and heating upgrades/renewal ensuring continuity of curriculum for 850 pupils



SWIFT ACADEMIES ◀ **DARLINGTON**

FUNDING SECURED: £1.3m in the last bidding round

- Fire safety and precaution works safeguarding 1,500 pupils
- Re-roofing projects benefitting 1,300 pupils
- Boiler and heating upgrade ensuring continuity of curriculum for 900 pupils



EDUKOS TRUST ◀ **EAST YORKSHIRE**

FUNDING SECURED: £1.5m over three bidding rounds

- Emergency lighting and fire alarm works safeguarding 450 pupils
- Re-roofing projects benefitting 200 pupils
- Heating and boiler upgrades



ASTON COMMUNITY EDUCATION TRUST ◀ **ROTHERHAM**

FUNDING SECURED: £2.7m in one bidding round

- Kitchen refurbishment and hot water/legionella remedial works safeguarding 1,800 pupils
- Re-roofing projects benefitting 4,500 pupils
- Boiler and heating upgrade ensuring continuity of curriculum for 350 pupils

OUR EXPERIENCE

Key:



Safe



Warm



Dry



ST MARY'S ACADEMY TRUST ◀ BARNSELY

FUNDING SECURED:
£1.5m over three bidding
rounds

- Re-roofing projects
safeguarding 500 pupils



LEARNING UNLIMITED TEACHING SCHOOL ALLIANCE ◀ SHEFFIELD

FUNDING SECURED:
£500k in the last two
bidding rounds

- Fire precaution works
safeguarding 600 pupils



AXHOLME ACADEMY ◀ NORTH LINCOLNSHIRE

FUNDING SECURED:
£600k in one bidding
round

- Re-roofing benefitting
550 pupils
- Heating and
distribution update
ensuring continuity of
curriculum for 550 pupils



INSPIRE ACADEMY TRUST ◀ ROTHERHAM

FUNDING SECURED:
£2.75m over three bidding
rounds

- Fencing and entrance
works safeguarding 1,700
pupils
- Fire safety works
- Boiler and heating
replacement benefitting 1,700
pupils

OUR EXPERIENCE

Key: Safe Warm Dry



GODALMING COLLEGE ◀

GODALMING

FUNDING SECURED: £500k over two bidding rounds

- Renewed roof lights and removal of all asbestos, safeguarding 1,900 students
- Replacement windows and new flat roof systems
- Benefitting 1,900 students



SHAW WOOD

ACADEMY ◀

DONCASTER

FUNDING SECURED: £1.8m over three bidding rounds

- Electrical re-wire and pupil toilet refurbishment safeguarding 500 pupils
- Replacement of cladding
- Benefitting 500 pupils



ENGAGE, ENRICH, EXCEL ACADEMY

TRUST ◀

HAMPSHIRE

FUNDING SECURED: £1.2m in the last bidding round

- Replacement of flat roof systems and roof lights, and improved insulation
- Benefitting 1,783 pupils



THE HIGHCREST ACADEMY ◀

HIGH WYCOMBE

FUNDING SECURED: £220k in the last bidding round

- Renewed roof lights and removal of asbestos safeguarding 1,000 pupils
- Renewed flat roof system and improved insulation
- Benefitting 1,000 pupils

ABOUT US



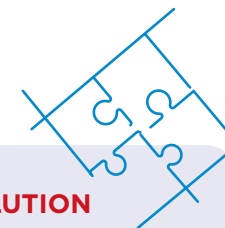
SERVICES

- Building surveying
- Project management
- Cost management
- Mechanical and electrical engineering
- Health & safety
- Sustainability consultancy



KEY DIFFERENTIATORS

- **Significant CIF bidding experience**
- **No cost to the academy**
- Close working relationship with the **Department for Education**
- Key partner in the **Condition Data Collection (CDC2) Framework**, following outstanding performance during **CDC1 Framework**
- One stop shop - **Turnkey Solution**
- Strong business focus on Education



YOUR ONE STOP CIF SOLUTION

We offer a **free bid support service**, which covers

1. **Engaging our education experts**
2. **Determining the right bid**
3. **Producing the bid**
4. **Delivering your successful project**

OUR TEAM



Steven Reynolds

Partner

e. steven.reynolds@uk.rlb.com

t. +44 (0)7584 583254



Tony Kinsella

CIF Funding Expert (South)

e. tony.kinsella@uk.rlb.com

t. +44 (0)7770 087468



Chris Jefferies

CIF Funding Expert (North)

e. chris.jefferies@uk.rlb.com

t. +44 (0)7825 746119

HOW TO APPOINT US

OPTION A

DIRECT APPOINTMENT

Through a traditional fee proposal

-  Contracting Authority (CA) and RLB discuss and agree preferred framework procurement route.
-  CA sends scope of works, pricing approach and call-off contract to RLB.
-  RLB responds with our fee proposal.
-  We jointly finalise fee, scope and drafting of call-off contract.
-  Award – CA sends confirmation of appointment to RLB and we jointly sign call-off contract.

OPTION B

NATIONAL PROCUREMENT FRAMEWORKS

At RLB, we are committed to providing consistent, high quality professional services to the public sector.

We have been appointed to a number of major public procurement compliant multi-disciplinary frameworks which allow direct award of services. These frameworks include:



ABOUT RIDER LEVETT BUCKNALL

100%
INDEPENDENTLY
OWNED AND MANAGED

900
UK PEOPLE

4000
EMPLOYEES WORLDWIDE

12
UK OFFICES

140
GLOBAL OFFICES



GET IN TOUCH

Steven Reynolds

Partner - Schools & Academies Lead

E: steven.reynolds@uk.rlb.com

T: +44 (0)7584 583254

RLB.com

AFRICA | AMERICAS | ASIA | EUROPE | MIDDLE EAST | OCEANIA

Rider Levett Bucknall | Condition Improvement Fund Capability

Join our professional network

 Rider Levett Bucknall  @rlb_uk

